



OCTOBER 2015

Down by ... the riverside



If you thought our village had been invaded by a swarm of orange and yellow bumble bees for two days recently, there is no need for concern. A long time in the planning, permission was finally granted to plant the riverside bank opposite the shops, an eyesore for many, many years.

Initiated by Progressive Paparoa and Keep Paparoa Beautiful, and with the assistance of Parks Supervisor Adrian Birkbeck of KDC, we were able to jump through all the hoops necessary to carry out the work required.

As with any community project, volunteers are the key ingredient, and we were delighted with the enthusiastic way in which they carried out the work. On both days 15 people, representing many groups in the community, showed what a fine spirit is evident in Paparoa, all assisting one another in an endeavour to improve and enhance our environment.

Huge thanks go to those people and in particular to Jacqueline Knight who kindly donated her time and labour away from her business, not only planting but designing and submitting her professional planting plans for KDC and NZTA approval. Thanks go also to Kauri Park Nurseries who supplied us with lovely healthy plants and who co-operated in every way possible. PP



Paparoa local and environmental landscaper
Jacqueline Knight



Farmer's Market goes weekly

In a move initiated by stall holders, the Paparoa Farmers' Market will be held weekly from the start of October. If this trial is successful weekly markets will become permanent during the extended hours of daylight saving. Stall holder, Ruth Mason of Chapel Olives welcomed the move saying "it will help to make Paparoa more of an attraction for people travelling on Highway 12 as people do love markets. It will also mean that future publicity will be less confusing as it will simply be every Saturday that the market is on."

In another development the market will have eftpos available with the bonus of cash-out. In today's cashless society many customers are limited by lack of cash, and this can place an unfair burden on local retailers when they ask for cash. Having cash-out available should mean more of that money will be spent in Paparoa. The eftpos facility will be clearly sign-posted and operated by Helen at her GoodLife Soap stall.

The market manager is always seeking new stall holders to add to the existing mix. This can be either short term or permanent. If you have authentic products of local origin that you would like to sell please contact Graham at the market or on 431 7209.

Helen's market stall with her hand-made GoodLife Soaps, will host the new eftpos facility



Paparoa Press

PUBLISHED MONTHLY BY
Progressive Paparoa Inc. (PPI),
for Paparoa, Pahi, Matakohē,
Whakapirau and Tinopai.

CIRCULATION 1,000

CONTACT US

- press@paparoa.org.nz
- ph 09 431 7209
- PPI, PO Box 107, Paparoa 0543
- www.paparoa.org.nz

ADVERTISING

Rate Card available by email
Booking & Copy deadline:
15th of month
Publication date 1st of month

Pahi's Keep NZ Beautiful Week

14-20th September was 'Keep New Zealand Beautiful' week. An event was organised to clean up Pahi Road to prevent rubbish from blowing directly into the harbour!

Thanks to these ladies, and others who did their bit to keep Paparoa beautiful.

Pictured from left: Ruth Smellie, Joy Bonham,
Pat Merritt, Jenny Longdon, Betty Boyle



Dealing with Stress

For many people spring is a nice time of year, after winter and looking forward to summer, but for others such as farming families it can be a stressful time with long days of calving and winter weather having taken their toll, and mating, financial pressures and uncertainty are added to this.

For others the stress may stem from worries about family, health, work, exams, finances, or something else. Everyone experiences stress in different ways, including what they find stressful. So learning how it affects you is very helpful in knowing how to best manage it.

Stress is the emotional and physical response we have when we are under pressure. Anything that poses a challenge to our equilibrium or normal state is a "stress." A certain level of stress is essential to motivate us to take action and to give interest and excitement to our lives. But it is the constant feeling of pressure that causes the negative feelings of stress. As a result you may have a hard time concentrating or making decisions, feel angry, irritable or out of control, or experience headaches, muscle tension or a lack of energy.

When stressful life events happen to us, we are more at risk of physical and emotional

difficulties if our everyday stress levels are already high. By keeping ourselves healthy and well supported, a negative life event will have less effect than when we are already feeling vulnerable and under pressure.

There are some clear strategies that are known to help reduce and manage stress.

Eat well, get enough sleep, drink plenty of water and undertake regular physical activity. For many people exercise is an extremely effective stress buster. Meditation, yoga or practising effective breathing techniques are useful for many. No matter how hectic life gets, take a break and make time for yourself — even if it's just simple things like reading a magazine, a good book, a short walk or listening

to music. Keep in mind that unhealthy behaviours, such as over indulging in food, alcohol or coffee to cope have usually developed over time and can be difficult to change. Focus on changing only one behavior at a time.

Accepting help from supportive friends and family can improve your ability to manage stress. If you continue to feel overwhelmed by stress, seek professional help through your GP or a counsellor.

If you are worried about someone else's stress level or coping, ask them how they are. Tell them you feel concerned and would like to help — offer a listening ear, help out, or take them out for a break, and remember to check in on them again.

Libby Jones

Professional help offered

If you are feeling strung out and overloaded by your current situation, you may feel the need to get professional help and talk things through with a qualified consultant.

Do you and/or your family need some assistance to sort the conflict, develop a new direction, a new plan to go forward?

Aurora Business Consultancy offers assistance in all aspects of business planning, mediation and organisational development in urban and rural businesses. Colin Wrennall is a qualified consultant with a farming background and all consultations are completely confidential.

For more information go to www.aurora-businessconsultancy.co.nz as per the advert below and call Colin 021 811 126.



AURORA BUSINESS CONSULTANCY

STRATEGIC PLANNING, CONSULTANCY, MEDIATION,
ORGANISATIONAL DEVELOPMENT IN URBAN & RURAL BUSINESSES

COLIN WRENNALL

Ph. 09 833 9459 021 811 126

colin@aurora-businessconsultancy.co.nz

A.A.N.Z.P.A. www.aurora-businessconsultancy.co.nz P.B.A.N.Z.

Tennis season opens

Paparoa Tennis season is starting again so dust off your rackets. Tennis is a great game that the family can play together, it suits all levels, is good for fitness and you can play it anywhere there is a court. We are really lucky to have great courts in Paparoa open all year so come along and make the most of it. Make this your year to learn tennis or improve your skills. We have weekly coaching sessions for children and several sessions of group professional coaching for all levels of children and adults throughout the season.

Adults tennis starting Tuesday 29 September 6–7.30pm

Kids tennis starting Tuesday 13 October
Little kids 4.30pm, Big kids 5.15pm

AGM is set for Saturday 7 November, 1pm, followed by tennis afternoon. We are not looking for office holders (unless you are really keen) but come along to the AGM and be part of making decisions about how the club and season runs.

Any queries contact Sue Skelton President 431 6224

50 years tried and true ...

David Wilson has been operating in the limeworks and lime spreading business for 50 years this year! He was in business even before Skelton's Drapery opened!

David bought his first bulk fertiliser spreader, a Bedford, in 1965 and so began his spreading business sourcing lime from Brian Poyner's quarry near Petley Road and also from the limeworks near the Ararua corner.

The first Bedford bulk fertilizer spreader



In 1973, he and Brian joined forces, and called the business *North Kaipara Transport Limited*. David took over this company on his own three years later.

The present Huarau Station Road site was set up in the 1950s by E.E. Bellingham Co. Ltd. as a fertiliser store and limeworks. Limestone was sourced from Mooney Road, as it is today. It is crushed, and made into various mixtures with fertiliser, and stored in the big sheds; one of which was part of the original Huarau Station buildings.



David and his present-day Iveco truck and trailer.

This fertiliser was railed all over the North Island. When David took over these works

in 1979, about the time when raiing was coming to an end, the siding was due for renewal. But plans changed and NZ Railways removed it. At this time the passenger service also ended.

Today, apart from crushing and mixing lime, North Kaipara Transport stores various mixtures including Balance 'Agri-Nutrients' products and makes dicalcic phosphate.

Among the many changes over 50 years, David says that one modern truck and trailer now handles the work which required multiple owner/drivers in days gone by.

Huarau Station was the Northern Terminus in 1921.



Spreading lime on pasture is important as it can reduce soil acidity and improve plant growth. The lime from Mooney Road has been tested and is high quality - easily soluble and readily taken up in the soil.

The recently set-up recycling and rubbish transfer station is an extension of their business.

Local farmers thank you for your excellent service over all these years David. PP

Present day photo from across the railway



What's PPI been up to lately?

Progressive Paparoa Inc has been active in the community for almost 15 years and many of its activities are now just part of what makes Paparoa tick. PPI was formed to complement existing organisations and fill a need that was lacking.

PPI operates a number of subcommittees and over the last few months has been active in the following areas:-

- Paparoa Farmers' Market, held fortnightly.
- Paparoa Press, published monthly.
- Keep Paparoa Beautiful (KPB) has beautified the riverbank.
- KPB replaced the Village Green pest cherry trees with dwarf kowhais.
- Paparoa Lions and PPI have maintained the Bush Walkway and cleaned slippery areas on the boardwalk. PPI and Lions pay local contractors to do maintenance work. Possum and vermin control is ongoing.
- PPI pays the annual NRC consent fee for The Landing jetty.
- paparoa.org.nz website is maintained and developed as a resource for locals and visitors.
- Paparoa Print Shop (Skelton's Drapery) is available for printing both private and commercial work.
- PPI is discussing with neighbouring communities and Northland Inc the rebranding of the Twin Coast Highway as a tourist route.
- A Steering Group is part way through a study on the feasibility of establishing a Lifestyle Village for seniors in Paparoa.
- PPI maintains the Community Notice Board opposite the Paparoa Store.
- PPI produced a Community Business Directory.
- PPI has an excellent relationship with Kaipara Council and has contact on a wide range of issues. Recent liaison included the riverbank planting and top-up of the cushion fall bark in the playground.

It has been quite a wide ranging and busy time. Without the enthusiasm and commitment of the PPI members and their supporters, it would not be possible. PPI welcomes community feedback on any of their activities and of course support in any of these or future initiatives.

NKT Rubbish and Recycling

Hours: 10am - 2pm Monday to Saturday

EFTPOS AVAILABLE

Rubbish

1 standard rubbish bag	\$3.00
1 small rubbish bag	\$1.50
Car boot	\$20.00
Station wagons, people movers and SUV's	\$40.00
Utes and Vans	\$50.00
Small trailers (single axle, 2.4m x 1.2 x .8m max)	\$50.00
Loaded vehicle PLUS loaded trailer	combined fee

Vegetation/Green waste

1 standard rubbish bag (65 litre)	\$2.00
Car boot	\$12.00
Station wagons, people movers and SUV's	\$20.00
Utes and Vans	\$20.00
Small trailers (single axle, 2.4m x 1.2 x .8m max)	\$20.00
Loaded vehicle PLUS loaded trailer	combined fee

Tyres

Car tyre	\$10.00
Truck tyre	\$25.00
4WD and light commercial tyre	\$15.00
Tractor tyre	\$40.00

Miscellaneous

Computers, TV's, fridges, freezers, couches, mattresses, microwaves, ovens	\$25.00
--	---------

Huarau Station Road, State Highway 12, Maungaturoto

North Kaipara Transport

431 8304 - 0211 08 207 395

KMU SURVEYS LTD

MAUNGATUROTO

Ken Urquhart

Licensed
Cadastral
Surveyor

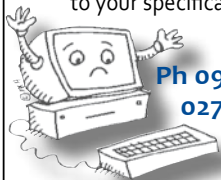


09 431 8705
021 161 2344

kenurquhart@xtra.co.nz

R & D MacDONALD COMPUTERS

Call Ross with your
computer problems & repairs
He'll even build a computer
to your specifications



Ph 09 431 6221
027 932 8114

email: ross@paradisebreeders.co.nz

Otamatea Repertory Theatre

ORT is raising funds to support its upcoming production of *A Christmas Carol* and to keep the best little theatre in Northland pumping out wonderful plays and musicals, at the same time as developing an incredible range of talent in their members.

On Labour Weekend 24 & 25 October, ORT is holding a novel fundraiser that makes you the star!

Working with award winning portrait photographer Deane Patterson, the ORT crew will help you select costumes and props (or wear your own best dress), put you through hair and makeup, and together make several different glamour portraits of you. You'll get three changes of wardrobe and three separate 'looks'.

The resulting photos will be retouched (the magic stuff) and you'll get high quality printed proofs.



You can order further prints of course, which will be made to museum quality by local artisan printers *Tawa Imaging*.

If you're feeling brave, you can get up to wall sized prints at a discount price.

There is also a chance for family portraits on both days in the morning. Families of up to eight can have group photos, combinations or individuals. You get a pair of archival prints worth the price of the sitting fee (\$150).

Spaces are limited so you need to book early. The glamour package is \$150. Book with a friend and you both get \$25 discount. For more information call Deane 021 244 3022 or mail@dcpatterson.com.

Deane Patterson - ORT

A1 Cats

Boarding Cattery

Ken & Faye
Subritzky

548 Pahi Rd



Ph 09 431 7477
www.a1cats.co.nz

Tango

Those who went to see *Tango Fling with Swing* recently held at ORT theatre enjoyed an amazing afternoon of seductive tango with John & Felicity Flower.

There was superior swing song and dance and items from up and coming talented junior singing pupils. Patrons were tapping their toes and itching to join in.

art

... keeping things
in perspective

"All artists are willing to suffer for their work.

But why are so few prepared to learn to draw?" — Banksie

Perspective is a convention in the European art tradition. Since the 14th century it has been accepted that objects are shown smaller and placed higher up the canvas in order to be understood as being further away from the viewer, and horizontal lines lead to a vanishing point or points, in the far distance.

Of course people don't see things like that, although a camera does. Most of the processes of human sight take place in the brain, where continuous series of image fragments are patched together using knowledge (the road continues behind the hill), and assumptions (the person behind the desk probably has legs). We become so accustomed to making this kind of assumption that we interpret them as reality.

The most straightforward perspective view in a painting has the subject placed centrally, directly in front of the viewer, so that lines go straight across or up and down. It becomes more difficult to ensure that the water level of a curved bay appears flat or to depict steps or a building seen cornerwise. There are good guidelines that can be learned and practised through observational drawing, and then more drawing. In order to understand and express reality, an artist needs to consider the whole picture while seeing only fragments, work from observed information and make careful use of perspective.

Helen Budd

BATTENSBY Bros.

CONTRACTING LTD

- Ground Cultivation • Silage and Hay
- Fertiliser Spreading • Fencing



Glenn 021 983 734 Ross 021 983 594

Ph: 09 431 6186 Email: battensbybrothers@xtra.co.nz

New business for old

The old Ministry of Works building in Paparoa is buzzing once more, with the sound of heavy engineering. Local resident Garry Frazer has relocated his highly successful fabrication business from South Auckland to Depot Road here in Paparoa.

For the last six years, and for five days a week, Garry has made the long haul to his works in Otahuhu, but now his daily commute is measured in minutes.

Garry and wife Josie, who also works in the business, have owned a house in Paparoa for the past 12 years or more, and just six years ago they decided they had had enough of the city life, and moved up, lock stock and barrel, except for Garry's business.

Born and raised in Ngatea, near Thames, Garry says he would have moved the business earlier if he had realised the Depot Road location was available.

"I grew up in the country, and I had to come back to the country" says Garry. "A friend first introduced me to the area

some 16 years ago, and I have loved it ever since".

A keen hunter and fisherman, Garry has supported the annual Paparoa Possum Purge since its inception, and this year entered not one, but three teams.

The lifestyle really suits the couple who have three children between them: daughter Devon, who lives in Auckland, son David who works for local contractors, Battensby Brothers, and six year old Willow, a keen student at Paparoa Primary.

Frazer Fabrication Services officially opened for business in Depot Road at the start of April and the future looks bright. If it's metal, Garry is interested



Josie and Garry Frazer with daughter Willow

- truck bodies, trays, trailers, diggers and heavy machinery. "Most of my Auckland clients have followed me up here, and local folk are beginning to realise we have arrived" says Garry. A local lad has already joined the company and the future includes taking on a couple of apprentices, "so I can pass on my knowledge".

And Garry has no plans to move on again. "I am happy here in Paparoa, I enjoy the people here, I enjoy my job, and I enjoy building stuff".

What more could a man want?

Kevin's Shed
panel beating & repairs

Just ask

027 642 4991

09 431 6444



3245 Paparoa-Dahleish Rd

"No job too small"

Ross Latto

**LICENSED
BUILDER**

House construction, alterations,
renovations, general repairs

Ph 09 431 7442 021 772 766

PO Box 17, Paparoa



THE KAURI MUSEUM

Real New Zealand Heritage

What's on at your Museum

SCHOOL HOLIDAY ATTRACTIONS

Magic Lantern Screenings 28 Sept to 2 Oct
10am, 11:30am, 1pm

DIY Trolley Derby Workshop Weds 30 Sept & 7 Oct
10am - 3pm

OTAMATEA QUILTERS EXHIBITION

23 October - 20 November

FREE ENTRY to the museum for residents of the old Otamatea District

5 Church Road, Matakoho, Northland. p: 09 431 7417 w: www.kaurimuseum.com

Museum holiday attractions

MAGIC LANTERN SCREENINGS are being held daily in the first week of the holidays (Sept 28 to Oct 2) at 10am, 11:30am and 1pm. Entry to shows is a gold coin donation. Find out what pre-dated photography and the films of today. To 19th century audiences, a magic lantern show was as entertaining as movies are to today's audiences. Come and see The Kauri Museum's Magic Lantern in action and also see the display of early cameras and magic lantern slides.

DIY TROLLEY DERBY

Workshop, 7 Oct, 10am-3pm, \$5. Join the museum's engineering experts and create a masterpiece.

Children will follow a construction plan from start to finish to help build a standard trolley cart, taking home inspiration and ideas for creating more of their own trolley derby entries.



You won't go away hungry!

THE CRUISER BAR and GRILL

- Wholesome, affordable meals
- Fully licensed
- Family friendly
- Inside-outside dining
- Private functions

In the
village,
Paparoa
Valley
Road



OPEN WEDNESDAY to SUNDAY, 5pm 'TIL LATE

ph 09 431 6918

Ross Murphy Plumber

CERTIFYING
PLUMBER

NEW HOUSING
RENOVATIONS
MAINTENANCE

09 431 7510
021 424 252



REMEMBER!



▼
▼
▼
Your
pets
need a
holiday
too

Franklin Masonic Lodge

Many old buildings in Paparooa's Franklin Road have stood the test of time, among them the one currently occupied by Te Pukearanga Kohanga Reo. For many years it belonged to the Franklin Freemason Lodge which has an interesting history.

This Lodge was formed in Franklin County at Pukekohe, and the Charter was signed by Prince Edward in 1885. In 1904 it was transferred to Auckland and in 1905 to the very new Mason Lodge No. 2138 E.C. at Paparooa. It was known as the Franklin Lodge from that time and the road was named accordingly.

Prior to 1904 several men in the Paparooa area joined the Prince Edward Lodge at Helensville as it was easier to travel by boat than go overland to another Lodge. The members went on horseback or by small boat to Pahi or Batley to board the steamer to Helensville, returning the same way. This time consuming journey took three to four days and was at the whim of the tides and the weather. Some members passed the time on board playing cards and imbibing

their favourite drink, often becoming rather unruly towards the end of the trip!

Robert Sterling and his brother-in-law Russell Smith, Charles Jenkins and David McCarroll decided that it would be far more convenient to have a Lodge at Paparooa and so began negotiations to obtain the Charter from Franklin. The first candidates (Messrs. F. Gill, T. McCarroll and Fred Chadwick) were initiated into the Lodge in January 1906, and so began many years of camaraderie and dedicated work supporting needy families. During 1906, the Lodge built their own meeting hall, having not succeeded in negotiations to buy Cliff's Hall. A portion of land was purchased from Mr. W. Davis for 50 pounds and a contract let to Mr. J. Deverill for 200

Franklin Road, as it was in 1908. The high pitched roof of the Lodge is the back roof on the extreme right.



pounds to build the premises.

The first meeting in the new building was held in November 1906, and it was consecrated in 1907. Subsequent meetings were well attended and the Lodge continued well into the 1960s. However, with falling membership, it closed in 1993 and the Charter was transferred to Hikurangi. Errol Morris, previously long-time farmer in Ararua, belongs to that Lodge to this day.

Te Pukearanga Te Kohanga Reo bought the property in Franklin Road and began providing pre-school sessions for Te Reo Maori during the 1990's. The building is thus nearly 110 years old and still going strong!

Based an extract from a history of Robert Sterling, Paparooa, compiled by Margaret Sterling.



Franklin Lodge founding members, 1907, in front of new building on Franklin Road. Note Dave McCarroll, back row, right; Robert Sterling Snr, middle row second from right; Russell Smith, middle row fifth from right; C.H. Jenkins, front row second from right.



**NORTHLANDS BIGGEST
BED OUTLET STORE**

- 1/2 PRICE BEDS
- SECONDS-SAMPLES
- SLAT BEDS
- PILLOWS
- TOPPERS
- ADJUSTABLE BEDS
- BEDROOM FURNITURE



**STOP BY AT ELLE CEE'S AWARD
WINNING CAFÉ- WHEN YOU COME.**

(09) 439 2243
18 Freyberg Road, Ruawai

g.a.s. Paparooa

Safety First

- Petrol, Diesel & Oil
- LOWEST priced milk
- Great variety of Bait



John & Nicki Eddy
09 431-6302

Mon-Fri 6.30am-6.00pm
Sat 7am-6pm; Sun 7.30am-5.30pm

Paparoa Primary a busy term 3

Recently we had a visit from Myron Simpson, New Zealand cycling champion, for our Duffy Role Model Assembly. Everyone enjoyed learning about his biking exploits and they loved their new books.

Awatea Tilby represented us at the Northland Cross Country Event and came 4th in the eight-year-old boys section.

We are all working hard to prepare for Pet and Show Day next term. Our artwork is up on the walls and children are caring for their lambs, calves and kids.

Room 3 are looking forward to a science visit to The Kauri Museum to learn about light.

We've had visits from Sport Northland to improve our fitness and team skills, including support from a great netball coach. We skipped to raise money for The Heart Foundation, and sold cupcakes to support the SPCA.

Important dates for next term:

Pet and Show Day

Wednesday 14 October

Grandparents Day

Tuesday 27 October

Athletics Day

Friday 13 November

Prizegiving/last day of term

Friday 11 December

Alison Cadman-Smith



Hospice truck

The Hospice truck stops at Paparoa on Thurs 8 Oct 10-11am. Bring any surplus goods you wish to donate. If you have large items, they will pick them up from your place. Phone to arrange.



Hospice Kaipara Inc purchased the truck four months ago to deliver equipment and for Hospice Shop pick-ups and deliveries. We are looking for businesses to advertise on the side of the truck to help towards the running costs of the truck. If anyone is interested in advertising please phone Hospice Kaipara's Pamela Barton, Fundraiser/Administrator on 09 439 3330.



Our truck will be in your area to pick up goods you would like to donate.

8 October 2015

10-11am

at Paparoa Village Green

If you have large items or furniture you wish to donate we will pick them up.

Phone 439 0692

Pets in the Valley ... Mule transport



Recently while wandering some back roads in China I came across some mules being used to transport rock.

It was quite fascinating to watch them patiently stand while being loaded with heavy looking rocks onto their pack saddles before heading up a steep path which was too small for a car. Some of the rocks took two men to lift and the mules carried several rocks at once.

The saddle packs were interesting; they had a 'leg' which folded down to the ground taking the weight on



one side while it was being loaded. I assume this stopped the pack saddle from shifting to one side during the loading process.

The mules looked in good condition but as my mandarin is limited to 'hello', 'too expensive' and 'New Zealand', I couldn't annoy the mules' drivers with any questions, but they seemed happy to have photos taken.

Mules are the result of a male donkey mated with a female horse. They have hybrid vigour - which means they have superior attributes from both parents. They are strong with great stamina and are harder than horses.

Their ears are longer than a horse's but smaller than a donkey's, and their tails are like thin horse tails. They are usually sterile.

There have been 60 recorded cases of mare mules having foals since 1527 and no cases of a male mule siring a foal.

My only veterinary experience with mules is that I gelded one once - even though they are infertile the males are still gelded to improve their behaviour. Enjoy the spring flowers.

Janine

Country Cutz

Gay Northcott
The Salon - Paparoa Village

Fully qualified
and professional
friendly service

- Ladies & Mens Cuts
- Perms, Colours & Highlights
- Weddings

Open Thurs-Fri
Wed & Sat by appt

After hours phone Gay 431 7007
Salon 431 7255



SKELTON'S

New season's
fashions
arriving
daily!



Great variety of new gift lines

Mention this ad &
get 10% off new fashion
(cash and credit card payments only)

Skelton's Paparoa Drapery

Mon-Fri 8.30am to 5pm Sat 9am to noon

Ph 431 7306

Lance Keay Contracting Ltd

- Effluent Pond Cleaning
- Single Pass Tillage & Seeding
- Cultivation
- Fertiliser Spreading
- Hay & Silage Mowing
- 6 Ton Trailer

Taipuha RD1, Paparoa, 0571
09 431 6308 021 383 908
lance.k@extra.co.nz

Keith the TV Guy

Freeview digital TV



16 TV and 9 Radio/Music channels are currently being transmitted.

Satellite dishes, decoders, cable etc., supplied and installed.

09 431 7143
or 021 239 4251

Community Connexions

There was a great turnout at the *Garden Furniture Workshop*. The fence battens came from Shanks' old fence lines as new fences are going in and so the battens had become obsolete.

Options were a chair, a side table, or a planter-box, and most attendees settled for the garden chair.

A good time was had by all with lots of laughter all round. Many learned new skills and were very proud of their creations, although there were a couple that you'd need to be pretty game to sit on. Garden art they will be.

Thanks to our tutor Lea.



The next workshop (check notice boards) will be *Deva's Garden Sculpture*, 10-11 October 2015 which will also be fun. See how to turn an old bit of furniture into garden art – using an old lounge suite, milk bottles, mosaic tiles, shells – and whatever else! Limited places are available for that weekend and so we'll plan for another next year.

The food banks always need extra produce, so any oranges,



mandarins, lemons, etc. are greatly appreciated.

It's time to start looking at our next *Giant Pumpkin Competition*. Anne has seeds aplenty. All enquiries to Anne 431 6229 or Sue 431 7116.

Paparoa Store

Proudly Supporting Paparoa

OPEN 7 DAYS

Monday-Saturday 7am-6pm

Sunday 9am-5pm



We stock a great selection of
CONFECTIONERY, ORGANIC, DELI, MEAT,
FRUIT, VEGES, FROZEN GOODS, BEER, WINE
and a wide range of grocery items at excellent prices

DVD's \$1 to \$8 per night
EFTPOS NZ HERALD POST CENTRE

Phone / Fax 431-7320
Cnr. Franklin Road and State Highway 12



Motoring Matters

Sitting in a cafe the other day, I became aware of a new Ford Ranger parked outside. It was a huge vehicle with a really aggressive look about it from bull-bar to very large wheels and the angular roll-over bar, it looked as if it was ready to take on anyone and anything at a moment's notice.

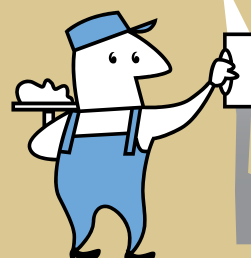
I began to think of other utes on the market and decided several models have the same kind of look about them. They are all very big with very powerful engines. Not so long ago 1600cc to 2000cc seemed to suffice, but now 4 litre petrol and over 3 litre diesel turbos are needed. My grandson has one of these monsters and with 200 horsepower it goes like a rocket, has every mod con and drives like a very quick car.

I wonder why the need for so much power and aggressive appearance? Is it a fashion led by the manufacturers or purely on demand? I would suspect the former.

Graham Roberts

TINOPAI PLASTERERS

WE GUARANTEE THE HIGHEST QUALITY FINISH



35 Years experience in...

- GIB Stopping
- Fibrous Plastering

for FREE quote, call us now!
Trevor 021 0300 073

Bee aware

September was *Bee Aware Month* aimed to raise our awareness of Kiwi bees needing plenty of food to keep them buzzing. Why?

We need bees more than you might think. Bees pollinate one third of the food we eat so we are dependent on them. It's a two-way street though, bees need us to plant food to keep them buzzing and they in turn pollinate flowers which produce the food we eat. In this way our agricultural exports also depend on bees.

Bee numbers worldwide are in decline and we need to do all we can to save them. Some of the main factors causing this are nutritional stress (a lack of food compromises the bees' resistance to pests and diseases), pesticides and sprays. An excellent goal for us all with gardens and farms would be to always *Bee Aware!*

What can we do to help?

Firstly, plant bee-friendly plants in our gardens, on our farms, and even along our roadsides. Bees like fruit trees, old fashioned or heirloom flowers, and herbs such as

borage, bergamot, thyme, lavender and rosemary, and they love bottlebrush, lacebark, pohutukawa and camellia. Blue, purple, white and yellow flowers are particular favourites.

Secondly, sprays and neonicotinoid coated seeds may be harming our bees. Insecticides are designed to kill insects and therefore bees as well. Sprays containing acetamprid, imidacloprid, thiacloprid, or thiamethoxam can be harmful. If you do spray, do so carefully - later in the day and not onto bees which are on flowering plants.

Many other simple ways we can help bees to survive can be found at the website www.nba.org.nz. (National Beekeepers Association NZ).

After all, to no longer have honey so readily available would be a crying shame. PP



White Rock Gallery

At White Rock we've been busy organising the following:

REFRESH: Spring has sprung and the gallery has had a full 'refresh' on 1st October, so do call in to see the new work.

FUNDRAISING:

- **Large Orchid Plants** for sale \$5 each – ph Stu 946 9990
- **Cake & Bake** Sat 10 Oct @ Farmer's Market
- **Summer Fair** Sat 5 December @ White Rock, stalls \$20, buskers \$3, ph Dennise 431 7012 to book

WORKSHOPS: Our *Creative Communities NZ* grant covers ...

- **Art Workshop 'Tools of the Trade'** tutor Elena Nicolaeva, 26 Oct 10-3pm, \$15 @ Ruawai Art Studio (max 10 people)
- **Craft Workshop 'Bag or Wall Hanging – NZ fabrics'** tutor Betty Cairns, 4th Nov 9-4pm, \$15 @ Paparoa Hall (max 6 people). ph Janice 946 9990 to book for workshops.

MEMBERSHIP: We welcome new members and 'friends', so if you'd like to be involved ph Jan or Stu 946 9990.

And you can check out our artists and crafters and their work at whiterockgallery.co.nz

October ... much planting

October is the month when everything in the garden speeds up and grows, especially weeds - and snails and slugs.

This is the month to get those heat loving plants into the ground - tomatoes, capsicums, egg plant, beans, courgettes, pumpkin, melons and corn. But if the weather stays cold, then hold off until the end of the month - Labour weekend!

If you're buying tomato plants and they're tall and leggy, then plant them deeper (if your soil is not too wet) so the stem is in the ground. The stem will quickly form roots on the sides and your plant will be much more robust. Put in stakes as you plant so the roots don't get disturbed later. Use a good liquid fertiliser as you transplant to give them a good starter boost.

Comfrey Tea is a good easy homemade liquid fertiliser. Just soak comfrey leaves in a large bucket or barrel of water. When they rot down the liquid will be high in potassium which is good for fruit and flowers and encourages the roots.

I sometimes just use very dilute rotted down cow or horse manure that's been kept in a bucket. Of course worm wee, diluted down, is excellent as well.

Don't forget to put out the slug bait as there are huge numbers of snails and slugs around at the moment.

Have a look at the Paparoa Show Indoor Schedule - which is now on line - to plan your planting. Encourage the children to enter for the under 16 years - Trevor Briljevich Vegetable Collection Cup.

Enjoy your garden - Stella

The Corner Place Nursery

New seasons Vege & Flower Seedlings

Herbs : huge selection

Strawberries: \$1.80 each
or \$1.60 each if you
buy 6 or more

Tomato Plants:

tall & dwarf varieties
well grown at our nursery

Feijoa and Citrus Trees

Roses just starting to bloom \$25.50

EFTPOS AVAILABLE

George & Etha Taylor
on the corner at 13 Jellicoe Road, Ruawai
09 439 2115

ethataylor@xtra.co.nz





Paparoa Motor Camp

CABINS | TENTS | CARAVANS | MOTORHOMES

17 Pahi Rd, RD1, Paparoa, Northland. Ph: 09 431 6515 Email: paparoamotorcamp@xtra.co.nz



Set in a quiet rural area, within easy walking distance to picturesque village with shopping facilities, a general store & post office, service station, restaurant, friendly country pub, takeaways, café, gallery, bush walks. Only 6kms to the Matakohu Museum.

www.paparoamotorcamp.co.nz



MEMBER



DAIRY DIARY ... the farming scene

There are now 215 cows walking through our little 12-a-side shed every morning to be milked and so I am there harvesting milk from 5 til 9am. A long stretch and certainly with ample thinking space.

The girls are almost all calved with only five late ones to come so calving was fairly rapid this year. We have had three deaths to date, two metabolic related (milk fever) and one serious calving complication.

We are raising 60 replacement calves this year which will calve as two year olds. These calves are being fed 4-6 litres of milk per day, plus hay and meal and they will be weighed and drenched every 6 weeks to keep them on track to meet target weights.

Last year's calves are looking good and averaged 295kg at last weigh. They will go to the bull on the 5th October and will calve early July next year.

With such a dry winter we have been able to feed silage on the ground right through and thus have built a good feed wedge ahead of us for the lean time leading up to balance date. When that will be in Northland is anyone's guess, but with all this warm rain and a good couple of rounds of fert, we are feeling comfortable moving forward.

The cows look good and should continue to cycle well moving up to mating.

Hopefully this predicted dry doesn't eventuate and we have a productive season to offset the low payout.

Sam Hartles

PAINTER

Dave Stephenson



For all your
painting
requirements
AND window
cleaning

No job too small

09 431 6623
027 490 3522

**Pahi
Community Hall
Society Inc.**

**ANNUAL GENERAL MEETING
2015**

**Sunday 1st November
11.00am at the
Pahi Hall**

All welcome

Defibrillator demo

Recently, a good number of interested people from the community, including Lions Club members, had their queries answered on how to deal with a sudden heart attack patient using an Automatic Electronic Defibrillator (AED). Obviously this can happen anywhere and at any time.

The session was run by Steve, St John EMT, Amanda, St John EMT/Paparoa Fire Force member, and Yvonne from Paparoa Fire Force.

help is called for by dialling 111 as soon as possible.

Applying CPR (cardio-pulmonary resuscitation) until the defibrillator arrives is also vital.



Steve Barr (Kaiwaka St John) with Amanda Brown (Fire Force and Bream Bay St John)

Once attached to the patient, the defibrillator machine is programmed to guide the user through the process, simply and effectively.

What to do, both before and during operation of the machine, is also important. A basic First Aid course run by St John or Red Cross would be ideal for everyone in our community.

It is vital if a person is not breathing or has no pulse, that

A defibrillator is available during business hours at GAS Paparoa (on the wall at left of the counter), and after hours by alerting Nicky or John in their adjoining home. Once a 111 call has been made, our local Fire Force & St John Ambulance will quickly be on their way with their defibrillator and support.

Yvonne Yorke

DREAMS Gifts & Home Decor



Trading
hours:

Mon-Fri
9-5pm

Sat
9.30-3pm

For that Special Gift



154 Hurndall Street, Maungaturoto
Phone 431-9199 teddie2@xtra.co.nz

HOMEKILLS

WAYNE & ANNETTE

09 439 2020



Dry Aged Beef Specialists
Traditional Manuka wood smoked Bacon & Ham

NEW LOCATION
TOKA TOKA

Paparoa JMB rugby

We would like to thank all of the individuals, families and businesses that have supported our little club throughout the 2015 season.

Congratulations to all our players. We held our prizegiving on 26th August. As usual the coaches had a tough job selecting trophy recipients as all children made progress throughout the season.

The trophies were awarded to:

Under 7's

Player of the Year: Ash Campbell
Most Improved: Alex Ball
Coaches Choice: Stevie-Ray Ball

Paparoa Destroyers

Player of the Year: Baylin Connett
Most Improved: Coryn Yorke,
Coaches Choice: Shayden Peele

Under 11's

Player of the Year: Hunter Connett
Most Improved: Riley SouthernVasey
Coaches Choice: Sam Parker



We ended our season with a club outing to MY Bounce; thoroughly enjoyed by all. Have a safe, fun summer and we look forward to seeing your tamariki at our muster in 2016.

Claire Southern-Vasey, Club President

Letters from the Old Post Office Lambie

August has been slinking about like a tired and wet dog. There has been little joy in the month and even less in the shed. Death knells for golf clubs and colonial sidekicks leaping about in Nuie have rendered a less than pleasant mood. Rain in the air and rain in the soul.



Drastic measures have been needed. The dog (even the cat), and I have racked our brains. Of course, this didn't take the dog long. However, the cat and I came up with a diversionary tactic- Lambie! What could be better than an orphan ram lamb leaping about the house? What else could bring a smile to the lips and a warmth to the heart? (Please do not answer that).

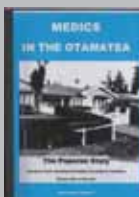
No sooner thought, than done. Lambie spent the first night in a slightly too small cardboard box next to the fire. He arose at 3am, 4am, 5am and 6am. The dog was exhausted. Needless to say it certainly enlivened the domestic dialogue, one could even say it proved exciting. As dawn was broken again the morning's sun could watch the warming of milk and hear the greedy slurping of milk, the belching of air and the sound of widdling on the wooden deck. Domestic bliss reigned. The dog was slightly reconciled when she realised that lambs dribble milk, and it is quite tasty.

Night two, Lambie slept quite well and we silently congratulated ourselves. Although it did bring back uneasy memories of childrearing. Nevertheless, our plot had born fruit and the man-in-the-shed was far too busy feeding Lambie, tripping over Lambie, getting Lambie out of the dog basket and off the couch, and watching Lambie following the dog through the one gap in the fence, to remain gloomy for long. Irritated, yes. Gloomy, no. Lambie has served his purpose. (No pun intended as he is alive and well and will not grace anyone's plate, ramming as he is in Pirongia).

Deb C

Medics history

Medics in the Otamatea is the story of how our medical services were founded in lower Northland (Warkworth-Ruawai). It was originally researched by the late Mrs Phyllis Stubbs in the early 1990s and completed by Mrs Marsha Marshall.



Many hours of research have resulted in this interesting historical publication, including photographs, and it is dedicated to the late Ron Skelton and Murray Hames (past Presidents of Paparoa Medical Society), who through the decades ensured the aims of the Society were fulfilled.

'Medics in the Otamatea' may be purchased at Skeltons Drapery or from Joy Bonham, 431 7490 Paparoa Medical Society.

KAURI COAST SEAFOODS

Oysters • Mussels • Smoked Fish

See us regularly at the
Paparoa farmers' market

09 431 6684
021 245 8820

540 Pahi Rd
Paparoa



Fresh flounder supplies daily

The Old Post Office Guest House Bed & Breakfast

Deb & Kevin 09 431 6444
www.oldpostofficeguesthouse.co.nz

For a
warm
welcome

- SMALL GROUPS OR LARGE
- MEALS ON REQUEST



Serving the community since 1903

LOOKING FOR A FRESH APPROACH?

It's all about people and the love of the land.

Northland Country

Your local agent

is ready to list ... are you ready to sell?

Let's talk.



Catherine Stewart
Bayleys Northland Country

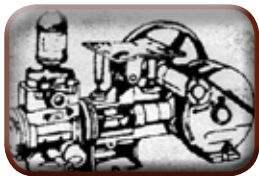
M: 0800 422 959 E: 0800 80 20 40
E: catherine.stewart@bayleys.co.nz

BAYLEYS

Real Estate

NEEDHAM PUMP SERVICES

For all Water Pump Supplies
& Repairs



09 431 8235

Ross 027 669 4464

Daryl 027 271 1961

32 Whaka Street, Maungaturoto

PLUMBER

Kaiwaka to Ruawai

- 30 years' experience
- All plumbing services including new housing and maintenance



ANDREW KENNY
ph 027 642 8320

LIFESTYLE AUTOS

new business in town!!
Roger Price



**Full
mechanical
services
Warrants
of Fitness**

Paparoa Valley Road
next door to G.A.S.
Phone 431 6620

FARMWORK SERVICES

For all types of fencing, stockyards,
handyman work, tree felling, tractor work etc.

**FIREWOOD
DELIVERED**



phone

Mike 09 431 6509

027 203 2694

email

farmwork.services@gmail.com

12 tonne digger now available

Katrina wins with essay

Congratulations to Otamatea High School Year 9 student Katrina Poyner who entered the nationwide Margaret Mahy *Starlight Essay and Poetry* competition. From 345 entries, Katrina's was one of the top ten. Her prize includes an all-expenses-paid trip to Twizel, South Canterbury, courtesy of Genesis Energy, a kitset Galileoscope, and trip to the University observatory at Mt John in October as part of the Aoraki Mackenzie *Starlight Festival*.

We publish Katrina's (slightly abridged) essay 'The Twins' below. PP



The Twins

Who would want to be an astronomer? All they do is stare up at the sky, looking at stars. What do they see up there?

I'm sitting on the roof of our hayshed with my brother Ben. He is looking up at the stars like they're the most interesting thing he's ever seen. I'm freezing out here, even though I'm wearing the jumper Gran knitted for me before she moved to the city. Ben doesn't seem to even notice the cold, and he's only wearing a summer T-shirt and shorts. I don't understand –

"I've found them?" Ben exclaimed loudly, breaking my train of thought. "Who have you found? Where?" I asked, looking up in the direction he was pointing.

"Gemini", he answered vaguely, still staring up at the sky. "The Twins". We live on a farm in the middle of nowhere. Who could he have seen?

"I don't know anyone who has a twin! Who are they?" Ben rolled his eyes. "They're a constellation", he said, like it was the most obvious thing ever, "and, as for who they are, that depends where you're from, and what you believe in. The Romans say they are the brothers Romulus and Remus, two heroes who founded

Rome. The ancient Greeks say they are the twins Castor and Pollux, the sons of Leda and Zeus". I thought about what he had said. "Who do we believe in? We're not from Rome, and we're definitely not ancient Greeks! We're New Zealanders, so who do we think they are?" Ben looked at me curiously. "I ... don't know" he said, sounding confused. "I've never thought about it like that before". I smiled. Finally, something he doesn't know!

We sat there together, remembering when Gran still lived here. She let us try new things, and she encouraged us to learn about anything and everything. "What do you want your job to be?" Ben

asked, breaking the silence. "I don't know". I haven't thought about that before. I've always assumed that I would work here on the farm, like Mum and Dad want us to. I could go to the city, to be with Gran, but I would miss everything here, even just being here with Ben and learning about the stars.

"They're lucky", I said. "Who's lucky" Ben asked. "Gemini. They've been up there together for thousands of years. They don't have to decide who they want to be, or what they want to do." I sighed. "Can you show me where Gemini is?" Ben pointed up to our left. "Do you see those two brighter stars over there? They are Castor and Pollux, the heads of the Twins. Their bodies look like two stick figures holding each other's hands.

Do you see them?" I smiled, "yes".



Mrs Mac goes to dinner



Mac who?? And would you like hot pungent piquancy (mustard sauce) with your portion (chocolate brownie)? Can you eat your peas and corn (relieves callus) with a toothpick (molars choice)?

If you were one of the lucky ones to attend the Paparoa Sports Pavilion's Cryptic Dinner you too could have had some surprises as each course was brought out. The team of cooks and caterers did extremely well sorting through what the guests had chosen.

Half an hour was nowhere near long enough for us to decipher all the brilliant clues put together by a devious mind, but long enough to get a few of the clues right. Cleverly, jumbled beard turning over and going head to head with her, was an order for bread roll and butter, which if you got it right, went with some converted carriage in difficulty! With six guests per table there was lots of discussion as to the meaning of each clue, and much hilarity as the courses came out and we realised what we had actually asked for!

Congratulations to all who worked so hard to put together a great evening that was thoroughly enjoyed by all, although I must admit meatloaf with tomato sauce on the same plate as self saucing chocolate pud with whipped cream is not something I would normally order!

Elaine McNamara

HEY, KIDS . . . JUST FOR YOU . . .

Fe Fi Foe Fum - How Does Your Garden Grow?

It doesn't take much space to grow something delicious, nature's fast food. Ask an adult if you can have a spot in the garden, or make a new spot for your summer goodies to grow.



Now the weather is getting warmer, put those bean seedlings from last month to good use - by building a house for them to climb up. You can pretend you are Jack or Jill planting the beanstalk. Get an older person to clear a circle in the garden ready for your plants. Using bamboo sticks, harakeke (flax) flower staffs or even old manuka branches create a teepee shape, tied at the top with string, and big enough for you to fit inside. Around the outside of the teepee, plant your little beans at every pole, and some in between, apart from the doorway. In a few short weeks the beans will weave their way up, and by the summer you will have a cozy hiding spot, complete with bean snacks.

Some other great things to grow in the garden right now are:

Sunflowers - Plant just one or two, since they take a lot of room. Be sure to grow edible sunflowers, so you can roast the seeds for snacks later in the Autumn.

Lettuce - fast, easy and great to pop a leaf into a homemade hamburger.

Radishes - super fast growing for younger gardeners.

Strawberries - mmmm, fresh and yummy. Buy a plant from a local supplier, or ask an older neighbour if they have a tasty variety they wouldn't mind sharing with you.

Cherry Tomatoes - plant seeds in the garden or a pot, and then put a stake alongside as they like to be tied up as they get taller. And remember, water the ground, not the leaves!



Wool Trail

The Wool Trail exhibition at The Kauri Museum is an excellent display showing the significance of wool in our lives ever since pioneer days and still in fashion today.

Being versatile and durable as it is, this natural fibre has been put to standard use in clothing for bushmen, sawmillers, blacksmiths and fishermen due to its fire and water resistance and its warmth for undergarments. Yes, those long black 'bush wool' singlets and 'long johns' are still worn today.

Displayed are fine knitted baby garments, hand-woven blankets, wool tapestry and embroidery, wool floor rugs, high fashion 1900s garments, hand spun and home dyed women's wear and the iconic NZ Swandri topped off with the weaving master piece *Kaipara Wairua; Spirit of the Kaipara* by Grace Rushton.

Joy Bonham

Rotary speech competition



Congratulations to Rita Hames, Otamatea High School student, one of four finalists selected to compete at the Rotary Clubs South Zone speech competition finals held recently in Maungaturoto. This prestigious annual event is a great challenge for senior students throughout Northland.

Rita's speech was titled *The benefits of education outside the classroom* and was very well received. Having commenced her public speaking as a contestant

in the Paparoa Lions Speech competition, it is good to see her continued successes.



Rhoda Morrison

Your Full Time Local Real Estate Agent

Top Rural Salesperson
last 4 years Region 1

Listing to sell NOW

09-431 6912
0274 800 691

rhodamorrison@xtra.co.nz
www.roperandjones.co.nz



first
national
REAL ESTATE

Roper & Jones

Dargaville Realty Ltd
Licensed REAA 2008

Crompton Engineering Ltd

Phone/fax 09 439 2393
31 Jellicoe Road, Ruawai



Hay Racks
- covered
or uncovered

Palm Kernel
Trailers



website: cromptonengineering.co.nz
email: crompton.eng@xtra.co.nz

5 Questions for ... Alison Cadman-Smith

How long have you been at Paparooa School? *It will be 6 years this New Year's Eve.*

Where did you come from? *London. It was a huge culture shock but I love it here. A much better work life balance and it is so great to be surrounded by the sea, sun, sky and greenery.*

Why did you choose to come to Paparooa? *They offered me a job! It turned out to be one of the best things I've ever done. It is huge contrast to my last position but I can't imagine wanting to be anywhere else. It is a great community to work in and I am constantly amazed by the support everyone gives. I've never met such generosity.*

What were you doing before you came to Paparooa? *Teaching five year olds in South East London in a lovely, lively school of 300 children.*

What are you doing now? *I'm looking forward to the challenges of being Paparooa Primary School's next Principal. I am very fortunate to be working with a dedicated staff, children eager to learn, and the support of our wonderful whanau.*



PP

OUT & ABOUT

Our condolences to the Evans family on the recent death of George Evans. The Evans Family are longstanding farm owners in Paparooa-Oakleigh Road.

The Gypsy Fair didn't happen as, due to the sodden state of the showgrounds, it was too wet to set up their vans.

Farewell to Ian Lake, retiring from his position at the Kauri Museum. He is moving to Waipu and going campervan walkabout with partner Teri.

Chris Boyle (Pahi) had his outboard stolen from the back of his boat. A reminder to keep your outboard locked onto the boat or safely out of sight and take nothing for granted.

The Christies (Elaine & Gary) have sold their Petley Road property and are moving southwards, but keeping their involvement with the Paparooa A&P show.

The St John Trash & Treasure sale is the week of 5-9 Oct, Mon-Fri, 9am-5pm at Maungaturoto Centennial Hall. Please support this

very worthwhile cause, lots of treasure guaranteed. Donations of items for sale are welcomed. Enquiries to Eileen 021 142 0357.

Otamatea High School and the Maungaturoto District High School reunion is to be held 15-17 April next year. Register now at OHS 431 8230 or email ohs@otamatea.school.nz

Marohemo Quiz Night Sat 10 Oct 7pm. Get a team together (max 6 people) \$15 per team to contest the Cream Can Trophy. BYO and nibbles supplied. Call Bryce 4318 565 for info.

Kaipara Libraries get attitude with their new BorrowBox app. Over 1000 titles are available to all library members in e-books and audio books to download onto most devices. Come in to the library and be shown how to get started; or go to the KDC library website and sign up for free. This means Kaipara's library users can read more library books from wherever they may be in NZ or indeed the world! PP

OHS Rotary science courses

Three students from Otamatea High School recently represented our community at Rotary Science courses in Auckland and Whangarei. Natalie Birt, Kate Cawkwell Troost and Hanna Mills (pictured) attended a Maungaturoto and Districts Rotary Meeting, and gave a report, thanking the club for their support and the chance to attend.

They all spoke with enthusiasm having enjoyed their experience.



OFFICE RELOCATION

Our Head Office has now moved to
2088 Paparooa Valley Road, PO Box 108 Paparooa
Ph/Fax 09 431 6331 or 09 431 8339

(Previously Powell Contracting Ltd)

For All Your Earthworks – Roading – Drainage – Siteworks & Landscaping Supplies

WE STOCK: Bulk Compost – Topsoil – Sand – Riverstones – Lime Chip – Blue Chip – Bark – Post Peelings – Woodchip – Builders Mix – Cement – Easi-crete – Timber – Posts – Battens – All grades of metal Nails & Staples



Pro-max water tanks - Aqua water tanks - Drain coil - Culverts - Hurricane Gates - Full range of StrainRite fencing supplies



Stockist of Daltons & Watkins:

- Potting Mix
- Compost
- Bagged Shell
- Pebble and Scoria
- Bark & Fertiliser

Open Weekdays 8am to 5pm
Saturday 8am to noon

The Glass Guy

Broken
Window
Repairs

Phone Colin
09 431 6595

PAPAROOA FARMERS MARKET
LOCAL GOODS DIRECT FROM THE PRODUCER



SATURDAYS
9am-noon at the Village Green
October: every Saturday
November: every Saturday

ph Graham 431 7209

WHAT'S ON - OCTOBER 2015

SPECIAL EVENTS & MEETINGS

St John Trash and Treasure Maungaturoto Community Hall 5-9 Oct Mon-Fri 9-5

Arty Farties Inc Community Connexions: Devas Garden Sculpture workshop
Sat/Sun 10/11 Oct at Arty Farties 10-2pm ph Anne 431 6229, Sue 431 6117

Paparoa School Pet & Show day - Wed 14 Oct **Grandparents day** Tues 27 Oct

The Kauri Museum Holiday programme Magic lantern screenings and trolley derby workshops see page 5 for details

Quilters exhibition 23 Oct - 20 November, Kauri Museum

Rock n Roll dancing every 2 weeks from 4 Oct. \$2 pp, 2pm Paparoa Hall

Pahi Hall AGM Sun 1 Nov, 11am, Pahi Hall. All welcome.

REGULAR EVENTS, MEETINGS AND ORGANISATIONS

Anglican Church St Marks 1st, 2nd & 4th Sundays 10am, Hook Road, Paparoa
Ararua Church 10.30am every Sunday, All welcome ph 431 6622

Art Group Paparoa 1st Sun in month, Helen Budd's Studio, ph 431 6192

Art Studio, Ruawai Mon 10-12noon; Tue 7-9pm, ph Frances 439 2554

Arty Farties Summer Markets 9am-noon, opposite Village Green; Thur/Fri in the 'Tile Shed' ph Anne 431 6229; Crafty Kids Club alt Saturdays 10-2pm, Rm 5 Paparoa Primary School; Beginners Patchwork Group, Mon 7pm, Te Pahi River Dr.

Badminton Thursday kids 5.30pm; older/experienced 7pm, Paparoa Hall

Crafternoons 1st & 3rd Wed in month, 10.30-4pm, Tinopai Hall ph Lyn 431 6090

Exercise to Music Tue 10.30am Paparoa Hall \$5 ph Rose 431 7418

Farmers' Market Sat 9-noon, Village Green; Sep 5, 19; every Sat Oct-Nov-Dec

Fire Force 1st & 3rd Monday in month 6.30pm Depot Rd ph Cohan 431 6668

Gardening Club 2nd Wed of month, ph Lyn 4316090

Grey Power Last Wed in month, 1pm, Anglican Church Hall, Mgto

The Kauri Museum 'The Man from Matakohē' exhibition ongoing daily

Library Mon 1.30-4.30pm, Wed 10am-12noon, Thu 1.30-4.30pm, Fri 9.30am-1pm.

Open Market days - alternate Saturdays 9.30-1pm

Line Dancing Thurs 10am-noon Paparoa Hall ph Rose 431 7418

Mainly Music Wed 9.30am Paparoa Comm Church, ph Rebecca 431 7550

Matakohē Music Makers 2nd Weds month 7pm BYO Sports Pav'n \$2pp 4316772

Otamatea Quilters 1st & 3rd Mon month 10am, Paparoa Hall 09 439 2262

Outdoor Bowls Maungaturoto Green ph Tony 431 6026 or Brian 431 6884

Paparoa Community Church 10.30am every Sunday, Hook Road

Paparoa Hall Functions venue ph Robyn 431 7306 or a/h Loraine 431 7290

Paparoa Lions Dinner Meetings 3rd Mon in month 6.30pm, Sports Pavilion

Paparoa Playcentre Tues & Fri 9.30-12.30 Visitors welcome ph Tina 021 033 5128

Paparoa Plunket Society Coffee Group 1st Tue/month, 10am Franklin Rd

Paparoa Primary School Term 3 finishes Sep 18, Term 4 commences 25 Oct

Paparoa Toy Library Wed 10.30-1pm, Paparoa Comm Church, Hilery 431 7330

Sacred Soul Circle 2nd Sundays, 10am-12 Marohemo hall ph Helen 021 938 024

Selwyn Centre Thurs 10am for over 65's, St Marks, Hook Rd, ph 431 8193

Sports Pavilion Functions venue, ph Vickie Owens 431 6432 for bookings

St Mary's Catholic Church 10am Wed, 6pm Sat, Maungaturoto

Table Tennis Tues 7.30pm, Sports Pavilion \$2 Pete 431 6822

Tennis season started, see page 2 for details contact Sue Skelton 431 6224

Ukelele Players Beginners / experts, Thur 4pm Matakohē, ph Dennise 431 7012

Waka Ama Tues & Thur evenings 5pm, Sunday 10am, Pahi Domain

White Rock Gallery Open 7 days 10am-4pm, in Library building

Yoga - Chair Yoga Paparoa Sports Pavilion Mon & Thur 9.30-10.30am \$7

Yoga - Anamana Studio \$10/session ph Jenny 09 280 9694, 021 114 3370

PLEASE UPDATE US WITH YOUR DETAILS: press@paparoa.org.nz PP

HOOK, LINE & SINKER

There is not much to report this month, due to the boat being out of the water for maintenance.

A few snapper were caught last weekend, and a few kahawai, but no gurnard. But then, a nice six pound snapper was caught off Dams Road in the dingy along with three kahawai!

So there are still a few fish out there so long as you are able to get out and look for them.

Gravy

Otamatea Community Services Inc.**Annual General Meeting**

Wednesday 21st Oct
1 pm

155 Hurndall St,
Maungaturoto

ALL WELCOME

Paparoa Press PP**CLASSIFIED ADVERTISING****Bee Swarms**

If you see any bee swarms,
phone Mike
431 6008 or 021 134 3747

LOCAL TIDES for October 2015**OCTOBER TIDES - CALCULATED for PAHI-WHAKAPIRAU**

DATE	LOW	HIGH	DATE	LOW	HIGH
1st	7.51am	2.18pm	17th	8.10am	2.33pm
2nd	8.37pm	3.05pm	18th	8.48am	3.12pm
3rd	9.24am	3.53pm	19th	9.31am	3.56pm
4th	10.13am	4.44pm	20th	10.20am	4.49pm
5th	11.08am	5.44pm	21st	11.19am	5.52pm
6th	12.11pm	6.54pm	22nd	12.26pm	7.03pm
7th	1.24pm	8.05pm	23rd	1.38pm	8.14pm
8th	2.33pm	8.39am	24th	2.46pm	8.49am
9th	3.30pm	9.36am	25th	3.47pm	9.51am
10th	4.16pm	10.24am	26th	4.41pm	10.46am
11th	4.56pm	11.05am	27th	5.32pm	11.37am
12th	5.33pm	11.43am	28th	6.21pm	12.26pm
13th	6.07pm	12.17pm	29th	7.08pm	1.13pm
14th	6.41pm	12.50pm	30th	7.54pm	1.58pm
15th	7.16pm	1.23pm	31st	8.40pm	2.44pm
16th	7.51pm	1.57pm			

Community Directory

EMERGENCY: FIRE ■ POLICE ■ AMBULANCE dial 111

COAST TO COAST HEALTH CARE

Maungaturoto Medical Centre: 8am-5pm Mon-Fri 09 431 8576

Paparoa Clinic: Doctor Tue + Fri 8.30am-12.30pm..... 09 431 7222

For urgent after hours medical service (Wellsford)..... 09 423 8086

DISTRICT NURSE Dargaville Hospital 09 439 3330

Healthline - 24 hour service..... 0800 611 116

HOSPICE KAIPARA Dargaville Hospital 09 439 3330

KAIPARA DISTRICT COUNCIL Helpline 0800 727 059

Mangawhai Office..... 0800 100 388

LINKING HANDS Health Shuttle Service, Maungaturoto 09 431 8969

LIONS CLUB PAPAROA Secretary Alistair Banks 09 431 6373

MAUNGATUROTO CHIROPRACTIC..... 09 431 8019

MAUNGATUROTO PHARMACY..... 09 431 8045

MAUNGATUROTO REST HOME 09 431 8696

OTAMATEA COMMUNITY SERVICES Community House 09 431 9080

PAPAROA LIBRARY Membership free-of-charge, Wheelchair access

Mon 1.30-4.30pm, Wed 10am-12noon, Thu 1.30-4.30pm, Fri

9.30am-1pm. Open Market days - alternate Saturdays 9.30-1pm

PAPAROA PLAYCENTRE Tina Ball.....021 033 5128

PAPAROA PLUNKET Cynthia Keay..... 09 431 8187

PLUNKET Helpline 0800 933 922

PAPAROA PRIMARY SCHOOL 09 431 7379

PARENT PORT Inc. free help for families Linda 09 425 9357

PHYSIOTHERAPY Lyndsay Bargh Mon/Wed/Fri from 8am...431 8576

PODIATRIST / FOOTCARE Jayne Short 020 4022 65998 / 09 431 7188

PUKE ARANGA TE KOHANGA REO 09 431 7089

YOUTH & WHANAU FOCUS South Kaipara, Rose 09 431 7418



Tui photo thanks to Julie Harper

Rockers rock again

Rock'n'Roll dancing instructors are keen to have more young and young-at-heart people join them – Sundays, fortnightly, in the Paparoa Hall. At 2pm, the best of the 50's and 60's dance music begins ...

This is a brilliant opportunity for past dancers to swing again and for real beginners to learn the fun of dancing to the beat! The friendly instructors all loved to dance as part of the 'Kaipara Rockers' highly successful club (which sadly came to an end early this century) and each won many National and International top placings in annual competitions around New Zealand.

For healthy, happy, family time, this is one of the best – contact Missy Tilby, 431 6679 if you would like more information. The next class will be Sunday 4 October – why not come along and make the most of what these young people are offering?

The instructors waiting for more budding dancers: from left, Rukuwai Waata, Arapeta Waata, Puhi Waata and Ana Stock.



Possum purge sets new records

An amazing fundraising result for Paparoa Primary after several days of hunting followed by a family gala day, the Possum Purge broke all previous records. All together 1,148 furry menaces

were dispatched, with a solid effort coming from winning team "Fur-For-All", led by Les Tilby, who brought in 299, clear above second place "Jossie & The Pussycats" on 109, who narrowly beat 3rd place getters "Paparoa Possum Samad" on 107.

\$5000 worth of donated prizes were given away to winning teams on Sunday 20th September, at the Gala Prizegiving in between heavy rain fall, and thanks to all the support especially from local businesses to create a prize pool worth entering for!

Special thanks to pluckers Jeff Allen and Craig Hardisty, who were kept busy for days, and to the Possum Purge Committee - Libby Jones and Pete Hames deserving special mention for their ongoing support of Paparoa Primary.



REX BROWNE CONTRACTING

- Limestone & Metal Cartage
- Truck & Digger Hire
- Farm Roads
- Earthwork & Dams
- House Sites & driveways
- Wrapped Silage & Hay
- Cultivation
- Fencing & Mulching

Maize Silage planting & harvesting

09 431 7556
021 720 590

HANDYMAN

all jobs, odd jobs

BUILDING & PAINTING

ph Cam 431 6309
021 77 77 92

Carpet Layer

20 years experience

phone **Ian Ross**

09 431 6939 a/h
027 4996 413

Birt & Currie Surveyors Ltd

Local Phone 09 280-9591

Timely, friendly & personal service

info@landsurveyors.co.nz
www.landsurveyors.co.nz
PO Box 120 Paparoa 0543